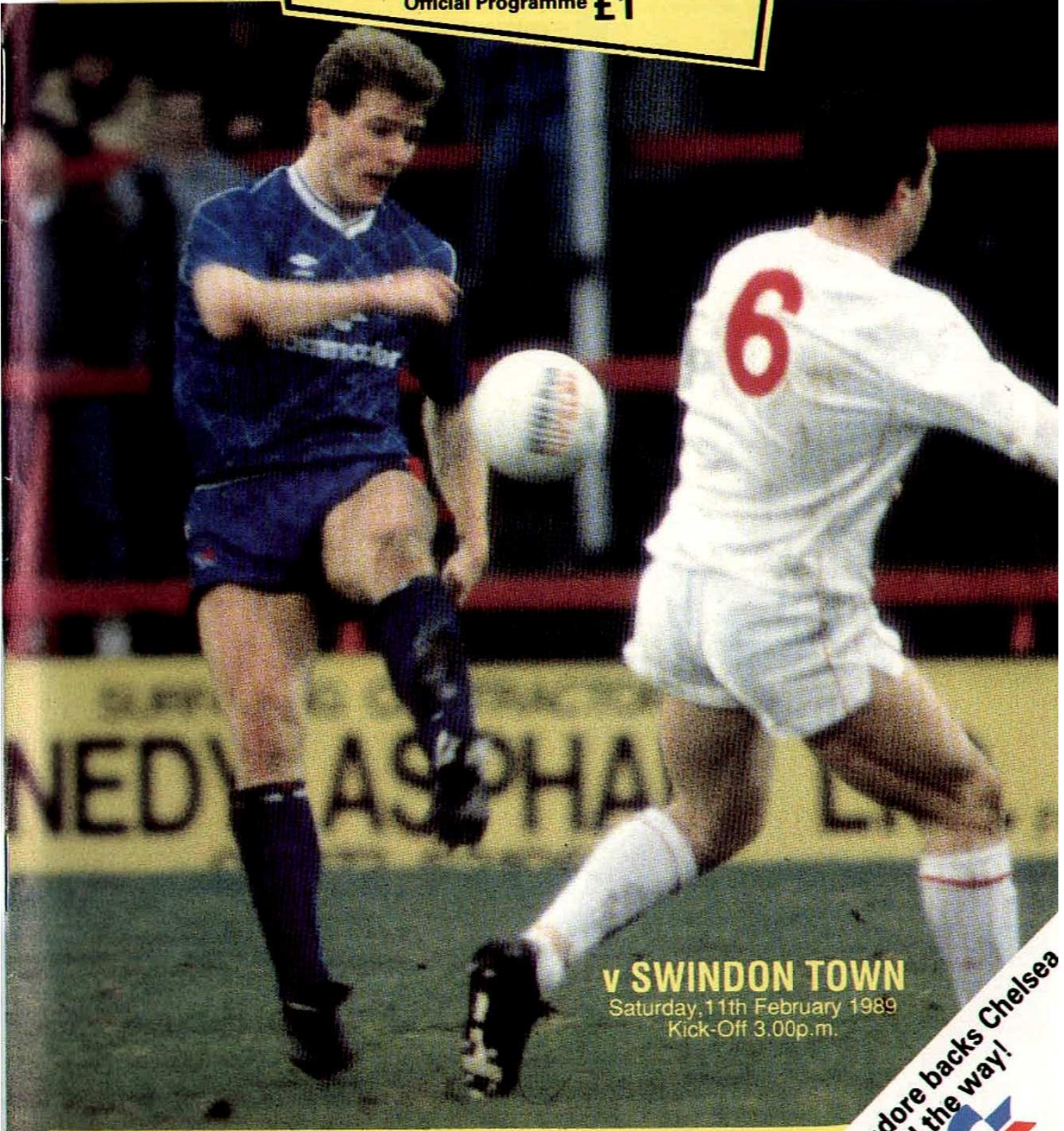


BARCLAYS LEAGUE DIVISION TWO

CHELSEA

Official Programme £1



v SWINDON TOWN

Saturday, 11th February 1989
Kick-Off 3.00p.m.

Commodore backs Chelsea
all the way!



CHELSEA FOOTBALL &
ATHLETIC CO. LTD
Stamford Bridge
Grounds,
Fulham Road,
London SW6 1HS.
Tel: 01-385 5545
Info: 01-381 6221
Lottery: 01-385 3255
Club call: 0898 121159



Founded 1905

President: G M Thomson

Vice Presidents: Steve Franklin,
Gary Davison, Jim Kane,
Nigel Fenner-Fownes

Chairman: Ken Bates

Vice-Chairman: Robert Bates

Directors: Colin Hutchinson,
Graham Smith, Yvonne Todd,
Stanley Tollman

Secretary: Janet Wayth

Management: Bobby Campbell,
Ian Porterfield, Gwyn Williams,
Eddie Niedzwiecki

Sales Manager: John Shaw

Lottery: Fred Pink

Members Club: June Richardson

Save the Bridge Project Director:
Colin Hutchinson

Chelsea Matchday Magazine Production

Editor: Dennis Signy O.B.E.

Pictures: Evans Photographic

Designed and printed by

Printstream Ltd, Leicester

BRIDGE BANTER

A RAMPANT Chelsea took full advantage of a Walsall side suffering from a crisis of confidence by handing out a seven-goal thrashing at Fellows Park last weekend - the Blues' biggest away win in their 84-year history.

This won the Barclays "Performance of the Week" award, but it was also a day of personal achievement for Gordon Durie. The Scottish striker scored five of the goals, becoming only the fourth Chelsea player ever to get five in a Football League match.

Durie joins an illustrious band of goalscorers. Jimmy Greaves scored five on three occasions (1958 v Wolves, 1959 v Preston and 1960 v WBA); Bobby Tambling once (1966 v Aston Villa) and statisticians might care to note the other was George Hillsdon way back in 1906 against Glossop.

This remarkable result was achieved without the services of Kerry Dixon, who was rested with a thigh strain, and Tony Dorigo, who was suffering from stomach trouble. Clive Wilson slotted into the full-back position and Mick Hazard started a match for the first time since last May. Peter Nicholas was back in the side, having recovered from his shoulder injury.

KERRY DIXON reached a milestone of his own when he scored his 100th in the League for Chelsea against Blackburn Rovers last month. He now has sights set firmly on the double ton.

CONGRATULATIONS, too, to Joe McLaughlin, who made his 250th first-team appearance in all competitions in the Walsall match and his 200th League appearance against Crystal Palace. Kevin Wilson also reached his half century of League appearances in the Palace game.

FAREWELL to two Chelsea players. Darren Wood, who was sold to Sheffield Wednesday after 178 first-team appearances, and Micky Bodley, who moved to Northampton Town after appearing eight times in the Blues' first team. We wish them well in their future careers.

An unusual distinction for Stamford Bridge - three FIFA officials will be on duty for today's match. Allan Gunn is the referee, with Brian Hill, last year's FA Cup Final referee, and Ray Lewis running the line. See Page 30.

THE CHAIRMAN'S guests for today's match are Mr Ronald Morton and his wife, Adrienne, from Eltham, South London. Mr Morton has been a Chelsea supporter since his first game in 1947. We extend our congratulations to Mr Morton on his birthday yesterday.

DORIS STOCKER, the widow of the late Ted Stocker who died in December aged 64, would like to thank all of their friends in the East Stand for their sympathy - and she says that she hopes to be back with them soon.



©All editorial material in this programme is the copyright of Chelsea Football Club and may not be reproduced without permission.

CHELSEA

CHRONICLE

HOW ABOUT 7-1, SUE!

KEN BROWN, the Plymouth Argyle manager, has a reputation as one of the nicest men in football. He is rarely without a smile.

Chelsea visit Home Park next Saturday for their third meeting this season with Brown's side, a 5-0 Second Division win for Chelsea in October being followed by a 6-2 Simod Cup victory the following month.

Brown, a long-serving West Ham United centre half who won an England cap against Northern Ireland in 1960, was formerly manager of Norwich City.

Probably the best-known Plymouth player is 33-year-old Tommy Tynan, who had scored 22 goals this season before this afternoon's match, but of particular interest to Chelsea is the fact that manager Bobby Campbell's eldest son, 23-year-old Greg, is a Plymouth striker. He made his debut for Argyle at Stamford Bridge in the Simod Cup game.

Greg, a former Manchester United apprentice, played for West Ham United and Sparta Rotterdam before Brown signed him this season.

Greg and his wife, Liza, are due to make Bobby and Sue Campbell grandparents for the first time next week. Sue Campbell is travelling to the game. "I want Greg to score and Chelsea to win," she says. How about 7-1, Sue?

JOE ROYLE, the former Everton and Manchester City striker who made six appearances for England, will be at Stamford Bridge on February 25 as the long-serving manager of Oldham Athletic. He started at Boundary Park in July, 1982.

Chelsea won 4-1 on the Boundary Park artificial surface in October. But Oldham showed their capabilities last Saturday with a 3-1 home win against Watford, their first win in 16 games.

FRONT COVER ACTION

Action man Gordon Durie takes the limelight on the cover today - and who else? Here he is swinging into five-goal action against suffering Walsall.

THE MAN IN CHARGE AT SWINDON TOWN LOU MACARI



LOU MACARI'S appointment as manager of Swindon in July, 1984, sparked a dramatic improvement in the fortunes of the Wiltshire club who, at the time, were in the Fourth Division.

Under Macari, Swindon were promoted as Fourth Division champions in 1985-86 and gained promotion to Division Two a year later, when they defeated Gillingham in a play-off replay at Selhurst Park.

As a player, Macari began his career with Celtic, moving to Manchester United for £200,000 in January, 1973. It was a record fee between Scottish and English clubs.

He made 329 League appearances for United, scoring 78 goals, and also played for United in the 1976, 1977 and 1979 FA Cup Finals. Lou was born in Edinburgh, gained 24 full Scottish International caps and was included in the 1978 World Cup squad in Argentina. He is 39.

TRUE BLUES

Congratulations and best wishes to Rachael Cook, who celebrates her 21st birthday today, from her Dad, Jane and all at Chelsea F.C.

Welcome to Joanne Worsley, who visited Stamford Bridge for the first time when the Blues played Crystal Palace. Carl Bugbee told us of your arrival and we hope you'll be here for many matches in the future.

Jo Corkett and her friend Caz are trying to get in touch with Mandy and Caroline from Battersea, to whom they gave their telephone numbers at the Chelsea Christmas Club Members party at the Podium in Covent Garden. Please ring them, they say, as it's nice to find women who like football.

The search is also on for a female Chelsea fan and her younger brother who were waiting for the team coach after the game at Blackburn Rovers in January. We have no names to go on, but if anyone can help - Barry Hills would like to hear from you at 1, Norfolk Cottages, Kings Cross Lane, South Nutfield, Redhill, Surrey.

NATALIE'S DELIGHT

The winner of the free raffle in the family section at the Crystal Palace game was Natalie Barratt. She was delighted as she was the first girl to win the ball autographed by the players and manager. In fact, Natalie didn't stop nattering about it ... but then she is from Chatham! John and Pat Donaldson, of Grays, Essex, write: "There were families from Crystal Palace in our section and they were great to be with. There was a wonderful family atmosphere all afternoon. Both sets of fans enjoyed the game together." We're glad everyone had a ball.



PANIC STATIONS for the Walsall defence! Gordon Durie sets out for yet another raid on the home goal, on a day he'll never forget. Neither will Fred Barber..... he's Walsall's goalkeeper. **DAVE BEASANT** had to get into the act somehow and he did so in style below by saving a late Walsall penalty.



IT'S A GOAL ALL THE WAY FOR GORDON.....



AND ANOTHER ONE FOR GOLDEN GORDON.....



AND A FINAL SALUTE FOR A GOLDEN NAP-HAND



ACTION

WALSALL



KEN BATES

Shame on Dennis Harding of Worcester Park. When he got engaged to Monica Carroll he promised to bring her to the Bridge to watch Chelsea play. Although this happy event took place six months ago, he still hasn't brought her. I discovered this recently at the Cromwell Hospital while I was in for a few days and Monica was one of the nice girls who took care of me. However, hopefully Monica is my guest today - so if you look up into the Directors Box just before kick off, Dennis, she will give you a wave. This however is a clear breach of trust on Dennis' part, quite apart from the fact that he isn't playing his part to ensure that we have lots of little Chelsea fans around the turn of the century!

One match he should have taken Monica to was the away game at Walsall. It is easy to say after the game that it was easy to beat the bottom -of -the -table club, but beforehand Walsall were quite optimistic as they introduced a new manager and striker. Due to his injured thigh, Kerry Dixon missed the game and sat with me in the box. As we kept scoring, watching his face was a study. He was delighted as the goals went in but I suspect he was wishing that Clarke, Hazard, Beasant or even Bobby Campbell scored as Gordon closed the gap between them in the goal scoring stakes.

It would be wrong for me to close on that match without paying tribute to the Walsall club. They were very hospitable throughout the afternoon behind the scenes and, although they got a hammering, Walsall didn't give up trying or resort to dirty tactics and the afternoon was rounded off when their supporters gave our players a standing ovation as they left the field. Walsall may be in trouble on the field but in the sportsmanship stakes they must be championship contenders.

I am indebted to Richard Fry for drawing my attention to the remarkable coincidence of our records this year vis-a-vis the same stage of the Championship battle five years ago. It is even more remarkable when you think of the ghastly position we were in after the first six games this season:

| | P | W | D | L | F | A | % | Pts. |
|---------|----|----|---|---|----|----|-----|------|
| 1983/84 | 27 | 14 | 9 | 4 | 56 | 31 | +25 | 51 |
| 1988/89 | 27 | 14 | 9 | 4 | 56 | 27 | +29 | 51 |

I am sorry there were a number of supporters at Walsall who did not know it was an all ticket game but we put it in the programme, the Bridge News, on Clubcall, the information line and on the scoreboard - what more can we do? Many Second Division Clubs have small capacity grounds and few facilities to offer visiting fans and they are simply unable to accommodate a big club like us. Please note that when all ticket rules are

enforced we will only sell our allocation to Club Members at the rate of one per Member and in this respect please note the future all-ticket fixtures on today's Box Office page. Incidentally we will be closing the Membership for this season on 28th February, so if you are not a Member and you will want to watch any of those games, then you will be well advised to join without delay. Application forms are available from the offices.

There have been comments and complaints from supporters about the gangways being blocked in the Shed, but quite frankly the situation is in your own hands. Please don't block them. You know the gangways have to be kept clear and the Stewards do their utmost but need your co-operation - so don't stand there. It is your responsibility and it isn't good enough to blame other people.

In response to the many enquiries I keep getting, I have to tell you that at the time of writing we will have no news on the outcome of our planning application. Although I am aware that the Department of Environment have their hands full with the Bill to introduce ID cards, it seems they have a problem with their priorities. If they would just give us the appropriate consent, Chelsea could get on and build exactly the kind of stadium the Prime Minister wants - modern, proper facilities, total segregation and the kind of quality environment to enable everybody to enjoy football again - at no cost to the public purse. Is there anybody out there?

Enjoy the game.

Ken Bates

LESS SWEARING PLEASE

The Police have been at great pains to tell me how pleased they are with the good behaviour of our fans this season and particularly so in the Shed. The response has been a lower level of policing in the hope that Chelsea can police itself by way of Stewards and of course the fans reminding each other of their obligations.

There is one problem-and that is bad language. I am aware that it is very difficult in today's society with foul language in everyday use on TV, at the cinema and in books, but if you choose to listen to it then that is your choice. In a public area such as Stamford Bridge your choice of language affects those around you, so please tone it down for the sake of your neighbours and for the sake of the Club's reputation.

PS. This also applies to the West Stand and certain people in the Executive Club.

HAVE CHELSEA HIT ON THE PERFECT SYSTEM?

by OUR MAN IN THE SHED

IT'S a question that's been debated in football since Nat Lofthouse was a nipper. What is the perfect system - one that covers your back and at the same time gets a lot of action going in the box.

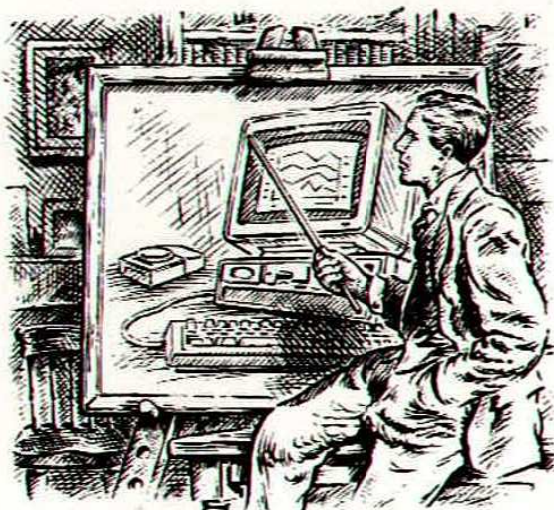
From the days of the late, lamented 2-3-5 attacking line-up, club bosses up and down the country have been experimenting with different configurations... the 4-3-3, the defensive 4-4-2 and the sweeper system often used by The Blues to match-winning effect.

* * *

● WORLD BEATER

TO help in the push for promotion, this season Chelsea have adopted a new system - C-O-M-M-O-D-O-R-E. After long hours in the boardroom at Stamford Bridge, Chelsea unanimously agreed Commodore would help them see the game differently.

Word has it that this system has been tried, tested and proven in such places as the States and West Germany. Many well-known international teams and even those who play the game at home report that they've taken to Commodore the way a striker takes to a well-placed cross.



● ONE TO WATCH

DOUBTLESS, the merits of this system will be discussed and dissected in boardrooms for many years to come. However, I am reliably informed by those who watch the game closely that Commodore is definitely one for the record books.

“They reckon it's all done by computer” insists Chelsea Boss.

Commodore

Commodore Business Machines (UK) Limited, Commodore House, The Switchback, Gardner Road, Maidenhead, Berkshire.



BOX OFFICE

**PLYMOUTH ARGYLE AWAY
SATURDAY, FEBRUARY 18
Barclays League, Kick off 3.00 p.m.**

THIS MATCH IS **ALL TICKET**.

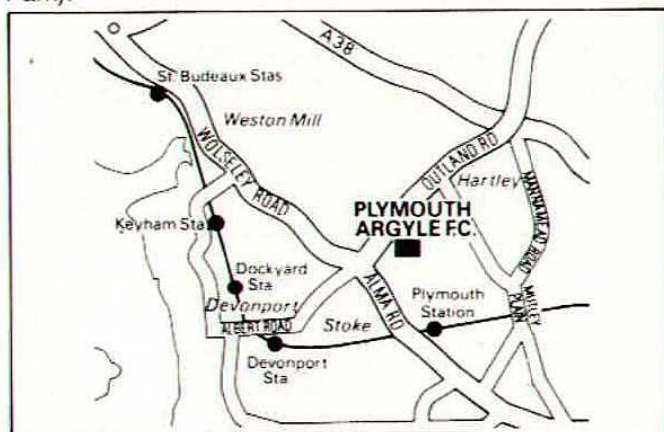
NO TICKETS WILL BE ON SALE TO CHELSEA FANS ON THE DAY AND SUPPORTERS NOT IN POSSESSION OF A TICKET ARE ADVISED NOT TO TRAVEL. NO SEAT TICKETS AVAILABLE. Because segregation is not possible, Plymouth are unable to allocate us any stand seats.

Terrace tickets for the Barn Park End, at £4 each (no concessions), will be on sale to Season Ticket Holders' and Chelsea Club Members' only, against Voucher B18, **AFTER** today's match.

Chelsea are organising charter train travel to Plymouth, fare £16 (ex Paddington) and tickets are available to Club Members' only on production of membership card and Voucher B18.

Membership cards must be produced at the time of boarding the train and no alcohol is allowed on Chelsea organised travel.

Travelling by road to Plymouth - suggested route: Approach Plymouth on the A38 and continue on the Plymouth By-pass (A38 Saltash) to the A386 (Tavistock) and turn left on the A386 (Tavistock Road) towards Plymouth for approx. 1 mile. Turn right and then left into Outland Road (A3041) to Home Park (large car park at the rear and side of Home Park).



**SUNDERLAND AWAY, SATURDAY MARCH 4
Barclays League, Kick off 3.00 p.m.**

NOTE! International call-ups could cause this game to be re-scheduled to a later date. Listen to the public address system today for latest information.

THIS MATCH IS ALL TICKET.

NO TICKETS WILL BE ON SALE TO CHELSEA FANS ON THE DAY AND SUPPORTERS NOT IN POSSESSION OF A TICKET ARE ADVISED NOT TO TRAVEL. THE CHELSEA ALLOCATION OF TICKETS IS VERY SMALL - ONLY 700 SEATS AND 1,950 TERRACE TICKETS - AND

SALES WILL BE ON A FIRST-COME BASIS AS FOLLOWS:

Seats will be available to Season Ticket Holders' only at £6 each on production of Voucher B19.

Terrace tickets cost £3.50 (no concessions) and will be sold only to Season Ticket Holders' and Club Members, Voucher B19.

SUNDERLAND TICKETS WILL GO ON SALE AFTER TODAY'S SWINDON MATCH IF THE FIXTURE DEFINITELY GOES AHEAD ON MARCH 4.

Chelsea organised travel to Sunderland will be by charter train (ex Kings Cross), fare £23, Voucher B19. Usual travel conditions apply.

**BRIGHTON AWAY, WEDNESDAY MARCH 15
Barclays League, Kick off 7.45 p.m.**

THIS MATCH IS **ALL TICKET**. **NO TICKETS WILL BE ON SALE TO CHELSEA FANS ON THE DAY. IF NOT IN POSSESSION OF A TICKET PLEASE DO NOT TRAVEL.**

NO SEATS AVAILABLE. Because segregation is not possible, Brighton are unable to allocate us any stand seats.

Terrace tickets are priced at £5 (no concessions) and will be available only to Season Ticket Holders' and Club Members' on production of Voucher B20.

BRIGHTON TICKETS ARE SCHEDULED TO GO ON SALE FROM THE BOX OFFICE AFTER THE OLDHAM GAME ON SAT, FEB. 25. BUT SHOULD THE SUNDERLAND FIXTURE BE RE-SCHEDULED, BRIGHTON TICKETS WILL BE AVAILABLE AFTER TODAY'S MATCH. Please listen to the P.A. for up-dated information.

Chelsea-organised travel to Brighton will be by coach, Club Members' only, Voucher B20. Membership cards must be produced when purchasing tickets (together with voucher) and boarding the coach. No alcohol is allowed on Chelsea-organised travel. Coaches will be ex Stamford Bridge, departing 4.30 p.m.

Before today's match you can buy East Stand tickets for the Swindon Town game from the main Box Office right up to Kick off time. The West Stand ticket office is open from 12.30 p.m. today for the sale of £8 West Stand tickets for today's match. Visiting supporters are prohibited in the East and West Stands.

WHAT'S ON SALE FROM THE BOX OFFICE AFTER TODAY'S MATCH AT A GLANCE:

OLDHAM (HOME), PLYMOUTH AWAY, terrace tickets and train travel, **SUNDERLAND AWAY,** seats, terraces and travel **OR BRIGHTON AWAY** terraces and coach travel.

Latest Box Office details are available on the Chelsea Information Line 01 381 6221. and Chelsea Clubcall on 0898 12 11 59.

TO REDUCE BOX OFFICE WAITING AND CONGESTION, EAST AND WEST STAND TICKETS ON MATCH DAYS ARE ONLY SOLD IN STRICT NUMERICAL ORDER.

BLUES

DIARY

JANUARY 10

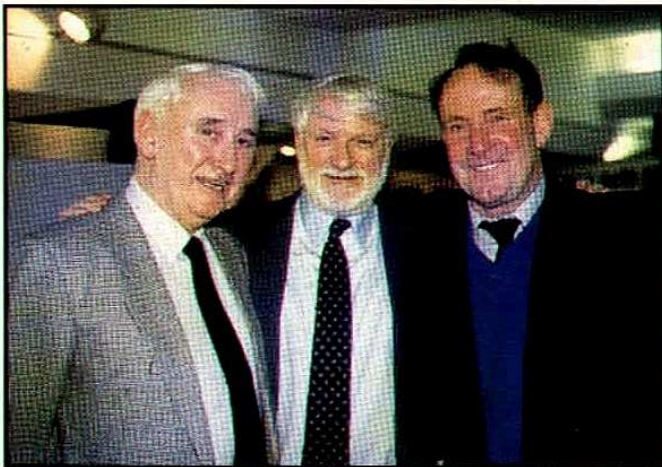
Chelsea's Simod Cup run comes to an end when they are beaten 4-1 at home by Nottingham Forest. The score after 90 minutes was 1-1 (Kerry Dixon scored the Blues' goal) but Forest rule the roost in extra time.

JANUARY 12

Bobby Campbell breaks the club transfer record by spending £725,000 to bring ex-Wimbledon goalkeeper Dave Beasant from Newcastle United.

JANUARY 14

Chelsea fly to the top of the Second Division when a Tony Dorigo goal is enough to beat promotion-chasing Cryst-



Chairman Ken Bates with his guests at the match against Crystal Palace . . . Wally Ferguson and Fred Davey.

tal Palace 1-0. The performance of the day comes from debutant 'keeper Dave Beasant.

JANUARY 19

Darren Wood, 24, is transferred to Sheffield Wednesday for £350,000. The dedicated midfielder came to Stamford Bridge from Middlesbrough for £50,000 in September, 1984.

JANUARY 21

Kerry Dixon hits a sixth-minute goal - his 100th in the League - but Chelsea have to be content with a 1-1 draw at Blackburn. West Bromwich lose, so the Blues keep their top spot.

JANUARY 25

Micky Hazard, having turned down a move to Newcastle for family reasons, is among the scorers as Chelsea romp to a 6-2 Middlesex Senior Charity Cup semi-final win over non-League Feltham. The Blues are one match away from the Wembley final of this Russell Grant-inspired competition.

JANUARY 27

Every squad member is given a run-out as Chelsea make the most of a vacant weekend to play a friendly at Swansea. The Blues go down 2-1.

CAMPBELL

CALLING

ANDY ROXBURGH, the Scotland team manager, was kind enough to ring me to explain why he was leaving Gordon Durie out of his squad for the World Cup qualifying game against Cyprus this week.

He assured me he regarded "Juke Box" as "one for the future" and that he was part of his long-term plans. He told me he was trying something new against Cyprus.

I asked Mr Roxburgh if he would 'phone the player to explain the situation - and he did.

Durie's response at Walsall after his two-match suspension for topping 21 disciplinary points was to score FIVE goals!

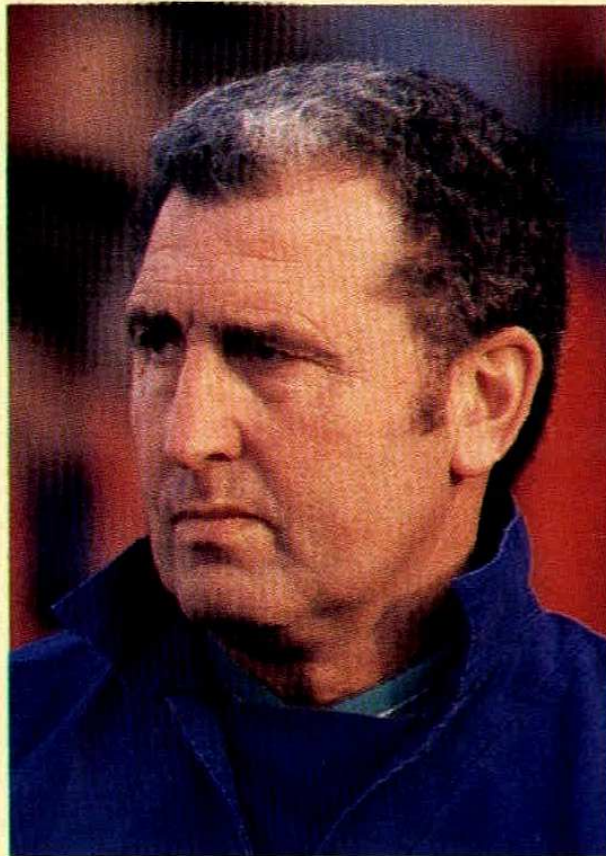
He certainly answered Mr Roxburgh in the most positive way and I am sure he staked a claim for a place next time.

A 7-0 victory at Fellows Park was Chelsea's best-ever away win and earned us the Barclay's "Performance of the Week" and a £650 cheque for a local boys' club.

I thought everyone played well and I was obviously delighted with the goals and such a convincing win, particularly as close rivals Manchester City also collected three points with a 1-0 victory at Portsmouth.

The game will be a pleasant memory... but it doesn't rate in the same class as a performance as our earlier 3-0 win at Stoke with ten men.

It may sound odd for me to praise goal-keeper Dave Beasant's performance in a 7-0 away win, but I thought his handling in a swirling wind was top-class and his penalty save was brilliant.



Don't forget that victory was achieved without Kerry Dixon and Tony Dorigo. Kerry injured a thigh at Blackburn a fortnight ago, so I decided not to risk him at Walsall as he was not 100 per cent ready.

Dorigo had a stomach upset the day before the game. I left the decision to him until the Saturday morning and, in fact, rang Bobby Robson, the England team manager, from the team coach at 1.40 p.m. on the way to our game to tell him Tony was unwell and would be unable to travel with the international squad to Greece this week.

Mr Robson was in his car at the time, on his way to Luton to watch them play Nottingham Forest.

So we were down to three men on international duty this week. Kevin Wilson travelled with the Northern Ireland squad for the World Cup qualifier against Spain in Belfast; Peter Nicholas and Gareth Hall went to Israel with Wales for their friendly match.



KERRY DIXON's shot is far too fiery for the Forest defence.



HIGH and handsome - that's David Mitchell in spectacular action in the Forest goalmouth.



LOADS of red Forest shirts around, but Kevin McAllister still manages to deliver a testing shot.



ACTION



NOTTINGHAM FOREST

IN

RESERVE



with Gwyn Williams

WE'VE had a mixed bag of results in the last few weeks - but we have certainly seen some goals.

Arsenal was our first port of call and some naive defending cost us dearly as we slumped to a 5-1 defeat. Our goal came from Eddie Cunnington.

We fielded a youngish side and played well in patches, but over the 90 minutes our defensive play allowed a strong Arsenal side two easy points.

Three days later, on Tuesday, January 17th, we played Luton at

home and that game finished 2-2, with a goal apiece for Colin West and Billy Dodds.

It was a good game and a draw was a fair result.

We travelled to Norwich on the Thursday for our third game in five days, and lost 2-1 to an experienced Norwich side.

It was disappointing to lose to a set-piece goal ten minutes from time. West was again our scorer.

We resumed our winning ways at West Ham, with an excellent performance against an experienced team who couldn't cope with the power and pace of Dodds and West up front.

We dominated the game and won 5-2 with goals from West (2), Dodds (2) and Cunnington.

Our next Combination game was against Crystal Palace at Tooting & Mitcham. We drew 2-2 - both goals scored by West - and played well, particularly as we lost goalkeeper Roger Free-stone with a leg injury after 30 minutes.

David Lee went in goal and

was unlucky to concede two goals in the last ten minutes to give Palace a lucky point.

The final game to report was the Middlesex Senior Charity Cup quarter-final at Feltham.

We fielded a strong team and ran out 6-2 winners, with goals from David Mitchell (2), Gordon Durie (2), Joe McLaughlin and Micky Hazard, to take us into the semi-finals - just 90 minutes from Wembley.

RESERVE TEAM GOALSCORERS CHART 1988-89

(Up to and including Wednesday 1st February 1989)

| | OVENDEN PAPERS FOOTBALL COMB. | | MIDDLESEX SENIOR CHARITY CUP | |
|-------------|-------------------------------|-------|------------------------------|-------|
| | Apps. | Goals | Apps. | Goals |
| BEASANT | — | — | — | — |
| BEATTY | 7(4) | — | 1 | — |
| BLAKE | —(1) | — | — | — |
| BODLEY | 17 | — | 1 | — |
| BUMSTEAD | 6 | — | — | — |
| BURLEY | 5(5) | 1 | —(1) | — |
| BYRNE | 14(4) | 2 | 1 | — |
| CATLIN | 3 | — | — | — |
| CLARKE | 2 | — | — | — |
| COADY | 5 | — | — | — |
| CORCORAN | 5(2) | 2 | — | — |
| CUNDY | 14 | — | — | — |
| CUNNINGTON | 2(1) | 3 | 1 | — |
| DIXON | 1 | 1 | — | — |
| DODDS | 24(1) | 19(4) | 1 | — |
| DORRIG | 1 | — | 1 | 2 |
| DURIE | 6 | — | — | — |
| FREESTONE | 3 | — | — | — |
| HALL | 3 | — | — | — |
| HAZARD | 14 | 2(1) | 2 | 2 |
| HINTON | 1 | — | — | — |
| HITCHCOCK | 9 | — | 1 | — |
| JACOBS | 5 | — | 1 | — |
| KILPATRICK | —(1) | — | —(1) | — |
| LEE | 7 | — | — | — |
| LE SAUX | 20(1) | — | — | — |
| MATTHEW | 1(1) | — | 1 | — |
| MCGALLISTER | 3 | — | —(1) | — |
| MCLAUGHLIN | 5 | 1 | — | 1 |
| MITCHELL D. | 1 | — | 1 | 2 |
| NEWTON | 3(1) | 1 | — | — |
| NICHOLAS | 1 | — | — | — |
| PHILLIPS | 5 | — | — | — |
| ROBERTS | — | — | — | 1 |
| SINCLAIR | 2 | — | — | — |
| SMALL | —(1) | — | — | — |
| STUART | 16(4) | 2 | 1 | — |
| WEST | 20 | 9 | 1 | — |
| WILKINSON | 2(2) | — | — | — |
| WILSON C. | 1 | — | 1 | — |
| WILSON K. | — | — | — | 1 |

(Appearances as substitute in brackets)

OVENDEN PAPERS FOOTBALL COMBINATION

(Up to and including Saturday 4th February 1989)

| | Pld | W | D | L | F | A | Pts |
|-------------------|-----|----|----|----|----|----|-----|
| Arsenal | 20 | 16 | 4 | 0 | 57 | 21 | 36 |
| Tottenham Hotspur | 22 | 15 | 6 | 1 | 54 | 18 | 36 |
| Wimbledon | 25 | 16 | 3 | 6 | 51 | 25 | 35 |
| Luton Town | 28 | 12 | 10 | 6 | 66 | 40 | 34 |
| Watford | 22 | 12 | 6 | 4 | 56 | 33 | 30 |
| Chelsea | 23 | 11 | 5 | 7 | 43 | 35 | 27 |
| Oxford United | 23 | 10 | 5 | 8 | 53 | 54 | 25 |
| Norwich City | 24 | 10 | 4 | 10 | 44 | 43 | 24 |
| Swindon Town | 21 | 10 | 3 | 8 | 44 | 37 | 23 |
| Milwall | 20 | 8 | 6 | 6 | 41 | 27 | 22 |
| West Ham United | 26 | 7 | 8 | 11 | 38 | 42 | 22 |
| Southampton | 25 | 8 | 6 | 11 | 38 | 51 | 22 |
| Crystal Palace | 22 | 7 | 7 | 8 | 30 | 31 | 21 |
| Brighton & H.A. | 24 | 6 | 8 | 10 | 32 | 50 | 20 |
| Fulham | 22 | 8 | 3 | 11 | 32 | 42 | 19 |
| Ipswich Town | 22 | 7 | 4 | 11 | 32 | 44 | 18 |
| Charlton Athletic | 21 | 5 | 4 | 12 | 36 | 47 | 14 |
| Q.P.R. | 21 | 3 | 4 | 14 | 19 | 42 | 10 |
| Portsmouth | 19 | 3 | 2 | 14 | 17 | 54 | 8 |
| Reading | 22 | 2 | 2 | 18 | 21 | 68 | 6 |

OVENDEN PAPERS FOOTBALL COMBINATION FIXTURES SEASON 1988/89

| | | | F A |
|-------|----|------------------------------|-----|
| Aug | 31 | TOTTENHAM H. | 0-1 |
| Sept | 5 | BRIGHTON & H.A. | 2-1 |
| | 14 | QUEENS PARK R. | 4-0 |
| | 21 | CHARLTON ATH. | 2-1 |
| | 27 | CRYSTAL PALACE | 1-0 |
| Oct | 4 | WIMBLEDON | 0-2 |
| | 8 | READING | 6-1 |
| | 18 | FULHAM | 2-1 |
| | 25 | SOUTHAMPTON | 5-3 |
| Nov | 1 | IPSWICH TOWN | 1-0 |
| | 12 | LUTON TOWN | 1-1 |
| | 22 | SWINDON TOWN | 2-1 |
| | 29 | MILLWALL | 1-1 |
| Dec | 3 | WATFORD | 1-4 |
| | 8 | PORTSMOUTH | 2-0 |
| | 14 | OXFORD UNITED | 0-1 |
| | 20 | WEST HAM UNITED | 2-2 |
| Jan | 7 | TOTTENHAM H. | 0-2 |
| | 14 | ARSENAL | 1-5 |
| | 17 | LUTON TOWN | 2-2 |
| | 19 | NORWICH CITY | 1-2 |
| | 28 | WEST HAM UNITED | 5-2 |
| Feb | 1 | CRYSTAL PALACE | 2-2 |
| | 7 | BRIGHTON & H.A. | 1-1 |
| | 14 | QUEENS PARK R. | A |
| | 21 | CHARLTON ATH. | A |
| March | 7 | WIMBLEDON | H |
| | 14 | READING | H |
| | 21 | FULHAM | A |
| | 28 | SOUTHAMPTON | H |
| April | 5 | IPSWICH TOWN | A |
| | 11 | NORWICH CITY | H |
| | 18 | ARSENAL | H |
| | 25 | SWINDON TOWN | A |
| | 29 | PORTSMOUTH | H |
| May | 2 | MILLWALL | A |
| | 9 | WATFORD | H |
| | 16 | OXFORD UNITED | H |
| | | MIDDLESEX SENIOR CHARITY CUP | |
| Nov | 17 | (4) STAINES TOWN | 1-0 |
| Jan | 25 | (5) FELTHAM | 6-2 |

SAVE THE BRIDGE

Colin Hutchinson Reports

SAVE THE BRIDGE AND BUILD A FUTURE.

WHAT A LOTTA BOTTLE!

Blues regulars at Riley's in the Kings Road have organised a series of Save The Bridge fund-raisers and 'banked' the proceeds in gallon whisky bottles.

They reckon the total tops £1,000, and we'll soon know the exact amount when Chelsea players drop in at Riley's to empty the loadsamoney loot.

Well done all those that have teamed-up for this Bridge booster and we'll bring you the cash count in a future programme.



HERE'S something different! STB have available - on a first come basis - a small quantity of collectors' item First Day Commemorative Covers. On offer are:

Chelsea F.C. 66th Anniversary of Election to the Football League (1905-1971) issued 27.11.71. - £3 each.

Chelsea v Stoke City, League Cup Final 4.3.72. - £4 each.

Manchester City v Chelsea, European Cup Winners' Cup Semi-Final, second leg 28.4.71. - £7 each.

These will be on sale from Janet Rainbow in the main Box Office enquiries window after today's match. Cheques payable to STB Society and backed by a bankers' card.

THE Flynn Family of W4 don't need Weight-watchers to shed surplus pounds-they give them to Save The Bridge! The Flynn's walked into Stamford Bridge the other day and tipped 128 pounds on the scales - cash not fat!

The family have spent recent months collecting small change coins to help the Fund. Even they got a surprise when the donation weighed in at £128.80.

OWING to re-organisation within CFC, Save The Bridge activities are conducted from the Box Office during the week and from the Kiosk (almost opposite what was the STB office) on match days.

IT'S still not too late to buy copies of the BBC colour videos of the 1970 F.A. Cup Final and Replay, Chelsea v Leeds United. Available on VHS only, you can purchase from STB at Stamford Bridge at £9.99 each or by post at £11 each (UK). Cheques and postal orders made payable to "Save The Bridge Society". If ordering by post, please allow 28 days for delivery.

The Final (reference 4103) runs for 134 minutes and features the 2-2 thriller at Wembley. The Replay (reference 4104) relives the excitement of the Blues lifting the Cup at Old Trafford, winning 2-1 after extra time.

HAVE you made your Go For Goals pledge yet?

The target is £500 for every goal Chelsea score this season.

You can make your pledge by letting us know the amount per goal you are prepared to promise. Minimum 10p., maximum unlimited.

Many supporters are also pledging an additional lump sum donation if Chelsea achieve promotion.

Settle your goal pledge by 31.5.89. and you will receive a signed certificate as a memento.

DAVID'S GOING ALL THE WAY

CHELSEA are building for the next decade. David Lee, the Blues' 19-year-old defender, has signed a four-year contract which will keep him at the club until 1992.

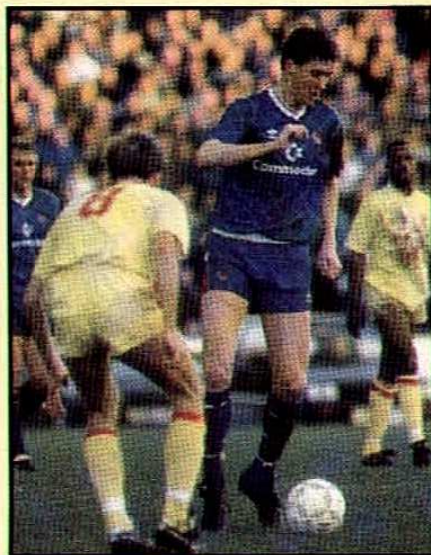
Manager Bobby Campbell said: "It's another step to securing the future of Chelsea. David has the ability to go all the way to the top."

From the start, David has made a significant impression, making a smooth transition from the reserves to the first team. But he could not have imagined the dramatic effect he would have in his League debut against Leicester City last October.

He came on as substitute with just 20 minutes of the match left and the Blues trailing 1-0. Amazingly, he scored with virtually his first touch and was then brought down in the penalty box to present Graham Roberts with the opportunity to score Chelsea's winner from the spot.

"My first-team debut was a big step-up," says David. "I was in the reserves last season, but I started off this year playing a few games for the first team in friendlies. I was delighted to get the chance, but to come on and score was a dream."

David started a League match for the first time the week after the Leicester



DAVID LEE - in total possession against Palace.

game in the 2-0 win against Walsall at Stamford Bridge. He then got an extended run in the side when Joe McLaughlin was injured during November.

"I wouldn't say I was a regular at the moment, but I'm always hoping to be in the side. Ideally, I'd like to play at centre-back, but anywhere is a bonus at the moment.

"It's a great experience, because I'm playing in an exceptionally good side with good players all around me."

David singled out his captain for particular praise. "Graham Roberts has been a tremendous help and he gives me plenty of advice. He has had a lot of experience and he tries to bring me along."

With just 22 first-team

games under his belt, David could be forgiven for feeling pressured when he steps out in front of the Stamford Bridge crowds, but he takes it all in his stride. "It doesn't go through my mind - I don't think it should at this stage. Obviously, when you make a mistake you are aware of the crowd, but you just get on with the game.

"At the start of the season, everyone was expecting us to do really well and, because we didn't win for the first few games, people began saying that Chelsea weren't going to do anything.

"But then we picked up and everyone is starting to talk about us now. Really, we're the team everyone has to beat."

David lives in digs near Epsom and his family travel up from Bristol to watch him in every home game and many of the away games.

He was signed as an Associate Schoolboy at 14 and has made steady progress, playing for his county, Avon, and representing England at youth level.

Now his ambitions are to establish himself in the Chelsea first team and claim a place in the England Under-21 side.

From there, as Bobby Campbell says, David can go all the way to the top.



The Outsole

Exclusively designed with the motion dynamics of the footballer in mind, it offers the following:

Directly moulded external heel stabilizers giving unprecedented support to the foot.

Raised heel placing the footballer in a more natural position for sprinting and changing direction.

Dished upper surface for a perfect fit to the foot giving comfort, stability and reducing slippage.

The Upper

Top quality full grain Brazilian leathers are specially selected, waxed and softened to give a superior feel.

Pre-moulded polyethylene heel counter cradles and supports the rear of the foot.

A pre-formed cushioned insock helps reduce friction, absorb perspiration and provide that extra comfort.

The Last

A revolutionary last produced as a result of extensive market studies. It offers unprecedented comfort, fit and support thereby helping eliminate blisters caused by foot slippage.

UMBRO INTERNATIONAL LTD.

FOOTBALL 1988 - 1989

BOOTS

BLUE OF THE WEEK

DAVE BEASANT

By DES KELLY

DAVE BEASANT is a man made for the big occasion. The most important save of his life, so far, was in front of a capacity crowd at Wembley and millions of television viewers.

Wimbledon were holding on to a shock 1-0 lead against Liverpool in the FA Cup Final. Then John Aldridge fell in the penalty area after a clash with Dons' defender Clive Goodyear and referee Brian Hill pointed to the spot. An equaliser looked certain.

Aldridge placed his spot-kick to Dave's left, but the big 'keeper hurled his 6ft 4in frame across the goal and turned the ball away.

That save ensured that Wimbledon lifted the Cup - an honour reserved for Dave as club captain - and Beasant went down in history as the first player to save a penalty in a Wembley Cup Final.

"People often say that the day flashes past you, but I can remember everything," says Dave.

Now, after a spell with Newcastle United, Dave is hoping to add to his memories with Chelsea.

A £725,000 club-record signing, he is sure to be a vital part of the Blues' push for a prompt return to Division One.

"I want to be a First Division player and I plan to get back on that stage with Chelsea," he says.

"As soon as I came here I knew things were right. I had an immediate understanding with the defence. They have a lot of experience and they play as a unit".

Dave, 29, started his career with Edgware Town after making rapid progress as a youngster - he first picked up a goalkeeping jersey at the age of 16.



"The school goalkeeper left and we had nobody to replace him - so I thought I'd give it a go," he says.

"When I left school I started work as a screen-printer and played Sunday football. Quite a few of the lads played for Edgware in the Athenian League and I got the chance to play in their reserve team, which was a big step up for me at the time."

Dave got his break when Wimbledon signed him for an initial payment of just £500. He made his debut in January 1979 and thereafter gained valuable experience in Wimbledon's battles in the Third and Fourth Divisions. This served him well when the Dons were promoted to the top flight.

After making 340 League appearances for Wimbledon, Dave became Britain's most expensive goalkeeper when he moved to Newcastle United in June for £850,000.

"Things were going fine in Newcastle. I knew they were in financial difficulties and that they had to sell someone, but I was

surprised when I found it was me.

"Then when I heard Chelsea had made a move for me I was happy to return to London."

His transfer to Chelsea went through in time to make his debut in the 1-0 victory at home to Crystal Palace - but he took a break in the transfer talks so that he could make an appearance on the Bruce Forsyth TV Show "You Bet!".

Dave will add considerably to the Blues' armoury in attack as well as defence, for his mammoth goal-kicks often provide goal-scoring opportunities.

In the past he has been known to dribble the ball out of his penalty area before hoisting the ball upfield (a trick he learned from former Hull City - now Sunderland - goalkeeper, Tony Norman). He has even been known to take free-kicks from near the half-way line.

But Dave has been told to curb his more eccentric mannerisms - and he says that manager Bobby Campbell has given him one important instruction: "The boss has said I'm not allowed to dribble out of the area with the ball."

Another member of the Beasant family has had a little instruction as well. His three-year-old son, Nicky, has been a little confused by the swift change of clubs: "He'd just got used to shouting for Wimbledon, then he had to change to Newcastle. Now we're trying to convert him to the Chelsea cause."

Dave lives in North London with his wife, Sandra, and his two children Nicky and nine-month-old Sam, and while he stays in his present home, he will always have a reminder of his Wembley success - if he peers out of his window he can just see the stadium's twin towers.



BLUE
OF THE WEEK
DAVE BEASANT
Picture - Evans Photographic

SPONSORS

| PLAYER | SHIRT £80 | SHORTS £50 | SOCKS £25 | BOOTS £65 | TRACK SUIT £35 | TRAINING KIT £45 |
|-------------------------|---|------------------|----------------------------|---|----------------------------------|------------------------|
| Bobby Campbell | NICOLA CLARKE | | | | | |
| Graham Roberts | GLEN PHILLIPS | | | | | |
| David Beasant | SPEARHEAD LTD 01-828-3443 | | | | | |
| John Bumstead | CLAUDIA HOLY | | | | | |
| Steve Clarke | THE COOL AIR COMPANY AIR CONDITIONING 01 942 0541 & 01 949 5259 | | | | | |
| Kerry Dixon | EXOL BUSINESS SYSTEMS FOR ALL OLIVETTI EQUIPMENT 01 689 6644 | | | | | |
| Billy Dodds | IAN GUYSTER & COMPANY, SOLICITORS, EDINBURGH HOUSE, 40 GREAT PORTLAND ST., LONDON W1H 5AH. 01 637 0358/9 | | | | | |
| Tony Dorigo | BRIAN MILLS - BOOTH WHITE & CO. | | | | | |
| Gordon Durie | IAN HAMMOND CARPET PLAN BOGNOR REGIS 0243 867911 | | | | | |
| Roger Freestone | MERLIN PLASTERING LTD. 01 643 4188 | | | | | |
| Gareth Hall | IAN, DAVID AND KEVIN | | JOY RAYMOND - BARKER | | KENSAL TRANSPORT SLOUGH 75216 | |
| Mick Hazard | DAVID HOLLAND | | | | | |
| Kevin Hitchcock | G.H.LUCKING & SONS EXECUTIVE COACH TRAVEL 0903 892262 & 0903 892625 | | | | | |
| David Lee | KYPROS SHACOLAS | | | KILO SIERRA LTD | | |
| Kevin McAllister | KRISTIAN HOLY | | | | | |
| Joe McLaughlin | GARY DAVISON | NICOLA CLARKE | EDDIE LEVY | THE COOL AIR COMPANY AIR COND. 01 942 0541 | | |
| David Mitchell | LINDA KHALASTCHI | | | | | |
| Peter Nicholas | BALLOON MARKETING SERVICES 01 387 0398 | | | MERLIN PLASTERING LTD 01 643 4188 | | |
| Colin West | ROBERT TCHENGUIZ | | | | | |
| Clive Wilson | TONY KHALASTCHI | | | | | |
| Kevin Wilson | PETER KHALASTCHI | | | | | |

GREAT

GAMES

FROM THE PAST

Today's Great Game from the Past is not connected with our visitors - there have not been all that many past encounters with Swindon Town - but takes us back to the corresponding Saturday 30 years ago, in 1959.

There is nothing quite as satisfactory as launching teenagers from a club's youth section towards a successful career. Two players who made their first-team debuts that day in our First Division home match against newly-promoted West Ham United were destined to go right to the top and earn full honours with England.

Chelsea had been going through a tricky time ... they had slipped into the lower half of the Championship table. So, after defeat two weeks running (against Aston Villa, 1-2, here in the fourth round of the FA Cup and then 1-3 at Villa Park in the League), manager Ted Drake decided the time had come to introduce more of his 'ducklings'.

The two 17-year-olds, Barry Bridges and Bobby Tambling, could not have made a happier start. In front of a near 53,000 crowd, Chelsea won 3-2, with both new boys scoring in the

WHERE were today's visitors, Swindon Town, 30 years ago?

They were visiting Newport County in the Third Division, won 3-0 before a crowd of 4,346 ... and finished 15th in the table.

first half and Jimmy Greaves - a veteran of 18 - shooting the winner. That brought his League tally for the season to 24 towards a final total of 32.

Bridges had already scored 55 goals in youth and reserve football that season. As for Tambling, only the week before his senior debut he scored five goals from outside-left in our youth team's 11-0 win against Watford in the South East Counties League.

From that performance in the bleak surroundings of our junior ground at the Welsh Harp, Hendon, he found himself, seven days later, playing in the First Division against West Ham before a packed house at Stamford Bridge. His goal put him in the Sunday paper headlines next day. It was a promising enough start for Bobby. What we didn't know was that in the years

ahead he was to become Chelsea's all-time highest scorer with 202 first-team goals for the club.

The last we heard of him, a year or so ago, was that he had returned from living in the Republic of Ireland and was back in familiar haunts down Portsmouth way.

Even more remarkable than the scoring debuts of the boys Bridges and Tambling 30 years ago this weekend was the fact that their inclusion gave Chelsea's forward line an average age of just 18. And in the First Division, mark you!

Those five youngsters whose combined years totalled no more than 91 were:- Peter Brabrook (21), David Cliss (18), Barry Bridges (17), Jimmy Greaves (18) and Bobby Tambling (17).

Five forwards, you note, in those days before two-leg European football came to switch the game's tactical emphasis away from scoring goals to preventing them.

As for the rest of the Chelsea team that beat West Ham 3-2 that day, it was: Reg Matthews in goal, the Sillett brothers Peter and John at full back, and a half-back line of John Mortimore, Mel Scott and Stan Crowther.

ALBERT SEWELL



HERE'S how it all happened. That super free-kick goal by Tony. It's on its way through the Palace wall (picture 1), stretching goalkeeper Perry Suckling to his limits (picture 2) and it's there in the far corner for three lovely points (picture 3).



ACTION

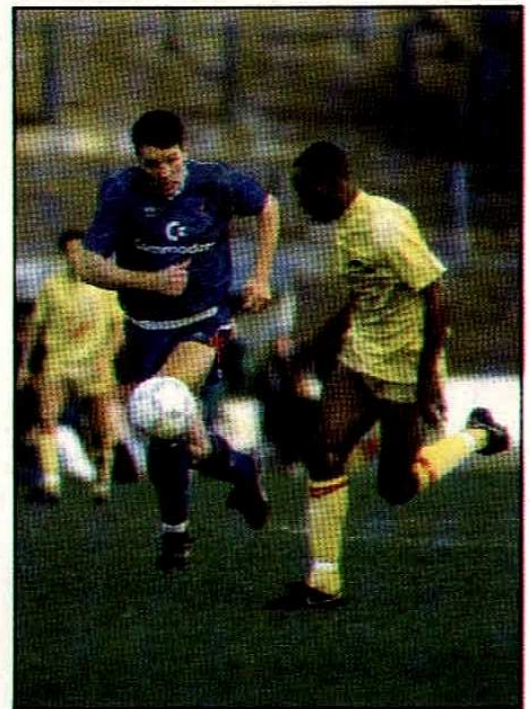
CRYSTAL PALACE



TONY DORIGO, a commanding figure for Chelsea - and England, we hope!



MORE pressure in the Palace goalmouth



..... and all safe and sound at the other end as Joe McLaughlin resists the menacing Ian Wright.

YOUNG BLUES



**With
EDDIE**

IT has been a busy few weeks since my last programme notes, and we have suffered mixed fortunes. Our first game was against Gillingham, and because of several injuries we were forced to play quite a few untried youngsters.

We did well early on and took the lead through Nathan Blake after 25 minutes. However, we weren't helped by injuries to Eddie Newton and Damian Matthew, and in the second half Gillingham, with the wind behind them, proved too strong for us and we were beaten 4-1.

The next game was the FA Youth Cup replay against Ipswich Town. It turned out to be very disappointing, not only because we lost, but because we missed the chance of being away to Manchester United in the next round.

We took the lead through a Blake header and went in at half-time 1-0 up without having played that well. But we never really recovered from conceding two goals early in the second half and lost 2-1.

We weren't at our best on the night but Ipswich, to be fair, were the better team over the two games.

We played Ipswich once more in the South East Counties League and gained our revenge with a 6-0 win.

Both sides made one or two changes from the first game, but we played much better this time around and were too strong for them.

Our goals were scored by Ian Kilpatrick (2), Graham Stuart (2), Jose Manuel and an own goal.

| SOUTH EAST COUNTIES LEAGUE | | | | F.A. |
|------------------------------|----|------------------------|--|------|
| August | 27 | WEST HAM UNITED | | 2-2 |
| | 30 | TOTTENHAM HOTSPUR | | 0-1 |
| September | 3 | ARSENAL | | 4-4 |
| | 6 | GILLINGHAM | | 0-2 |
| | 10 | IPSWICH TOWN | | 1-2 |
| | 17 | CAMBRIDGE UNITED (LC1) | | 2-0 |
| | 24 | MILLWALL | | 4-2 |
| October | 1 | CHARLTON ATHLETIC | | 1-0 |
| | 8 | LEYTON ORIENT | | 3-4 |
| | 15 | PORTSMOUTH | | 4-3 |
| | 22 | QUEENS PARK RANGERS | | 3-2 |
| | 29 | PORTSMOUTH (LC2) | | 0-2 |
| November | 5 | FULHAM | | 1-2 |
| | 12 | CAMBRIDGE UNITED | | 2-0 |
| | 19 | NORWICH CITY | | 1-1 |
| | 26 | SOUTHEND UNITED | | 3-1 |
| December | 3 | WATFORD | | 3-2 |
| | 10 | WEST HAM UNITED | | 1-0 |
| January | 7 | ARSENAL | | 2-3 |
| | 14 | GILLINGHAM | | 1-4 |
| | 21 | IPSWICH TOWN | | 6-0 |
| | 28 | MILLWALL | | 1-2 |
| February | 11 | LEYTON ORIENT | | H |
| | 18 | PORTSMOUTH | | A |
| | 25 | QUEENS PARK RANGERS | | H |
| March | 4 | FULHAM | | A |
| | 11 | CAMBRIDGE UNITED | | A |
| | 18 | NORWICH CITY | | A |
| | 25 | SOUTHEND UNITED | | H |
| April | 1 | WATFORD | | A |
| | 8 | TOTTENHAM HOTSPUR | | A |
| | 22 | CHARLTON ATHLETIC | | A |
| SOUTHERN JUNIOR FLOODLIT CUP | | | | F.A. |
| September | 13 | (1) CHARLTON ATHLETIC | | 2-3 |
| FA YOUTH CUP | | | | F.A. |
| December | 6 | (2) WIMBLEDON | | 4-0 |
| January | 4 | (3) IPSWICH TOWN | | 2-2 |
| | 16 | (3R) IPSWICH TOWN | | 1-2 |

| SOUTH EAST COUNTIES LEAGUE DIVISION ONE (Up to and including Saturday 4th February 1989) | | | | | | | |
|--|-----|----|---|----|----|----|-----|
| | Pld | W | D | L | F | A | Pts |
| Arsenal | 22 | 15 | 6 | 1 | 68 | 20 | 36 |
| Tottenham Hotspur | 19 | 15 | 2 | 2 | 42 | 16 | 32 |
| Q.P.R. | 22 | 10 | 7 | 5 | 46 | 27 | 27 |
| Watford | 18 | 7 | 8 | 3 | 27 | 22 | 22 |
| Leyton Orient | 22 | 9 | 4 | 9 | 39 | 43 | 22 |
| Chelsea | 20 | 9 | 3 | 8 | 43 | 37 | 21 |
| Gillingham | 20 | 8 | 5 | 7 | 36 | 35 | 21 |
| Norwich City | 18 | 6 | 8 | 4 | 35 | 26 | 20 |
| Millwall | 21 | 7 | 6 | 8 | 29 | 35 | 20 |
| Southend United | 20 | 6 | 6 | 8 | 29 | 35 | 18 |
| Ipswich Town | 23 | 8 | 2 | 13 | 37 | 52 | 18 |
| Charlton Athletic | 20 | 7 | 3 | 10 | 30 | 44 | 17 |
| West Ham United | 23 | 6 | 4 | 13 | 26 | 41 | 16 |
| Cambridge United | 23 | 6 | 4 | 13 | 25 | 49 | 16 |
| Portsmouth | 19 | 5 | 4 | 10 | 25 | 36 | 14 |
| Fulham | 22 | 4 | 4 | 14 | 23 | 42 | 12 |

| YOUTH TEAM GOALSCORERS CHART 1988-89 (Up to and including Saturday 4th February 1989) | | | | | TOTAL |
|--|--------|------|---------|------|--------|
| | LEAGUE | FAYC | LGE CUP | SJFC | |
| Blake | 5 | 2 | — | — | 7 |
| Bryant | 1 | — | — | — | 1 |
| Burley | 2 | — | — | — | 2 |
| Hopkins | 1 | — | — | — | 1 |
| Jacobs | 5 | — | — | — | 5 |
| Jose Manuel | 1 | — | — | — | 1 |
| Kilpatrick | 13 | 1 | 1 | 1 | 16 |
| Matthew | — | 1 | — | — | 1 |
| Newton | 1 | — | — | — | 1 |
| Sinclair | 1 | — | — | — | 1 |
| Stuart | 11(3p) | 3 | — | 1 | 15(3p) |
| Wilkinson | — | — | 1 | — | 1 |
| Own Goal | 2 | — | — | — | 2 |



HELPING THE GAME

The Football Trust receives £9 million annually from the Spotting-the-Ball competition run by Littlewoods, Vernons and Zettors and spends it all on projects which benefit football throughout the United Kingdom.

Since 1979 it has been committed to the development of the game at every level and its broad and varying initiatives have ranged from essential safety work at Tottenham to social work to Toxteth; refurbishment at Wembley to repairs at Welling; closed circuit television at all League clubs to community facilities at Oldham Athletic; transport improvements at Sheffield Wednesday to storm damage in the South East of England; from policing costs at Hull City to an artificial pitch at Hyde United.

1988-89 will see The Football Trust increase its commitment by investing further sums in closed circuit television, transport facilities for supporters and projects to bring Football League clubs closer to their local community.

WARNING

At the beginning of the season more than 110 League grounds in England, Wales and Scotland will be equipped with CLOSED CIRCUIT TELEVISION which has been funded by The Football Trust.

It is there to increase crowd safety and to help the police. Recording facilities enable film and photographs to be taken of disorder, which may subsequently be used in a court of law.

CLOSED CIRCUIT TELEVISION

SAFETY FIRST

Football grounds in England and Wales have reached their highest ever level of safety thanks to the £23,671,425 invested by the Football Grounds Improvements Trust since 1975.

Almost every League club has been assisted with essential safety work and further substantial sums have been spent to enable them to improve facilities. In the past year alone FGIT grants to Football League clubs totalled.

| | |
|--------------|-----------|
| | £ |
| Safety | 2,254,723 |
| Improvements | 770,561 |

In addition to its safety programme, FGIT has also allocated £1.5 million to build or improve family and disabled facilities at League grounds during 1988.

WE'VE GOT SWINDON TAPED

YOU can relive the thrills, the spills, the excitement of top class football in your home. This afternoon's game is being covered by our own camera crew to produce for you the perfect record of the game.

The Chelsea video - produced to broadcast standard - provides the highlights of this afternoon's entertainment. In full colour with action replays and commentary the Chelsea videos are a bargain at just £15 each. Add £1.95 postage and packaging if ordering through the post. Cheques to be made payable to Chelsea F.C. Videos.

Relive some magic moments in Chelsea's history through our video collection. All our home games, and some of our away fixtures as well, are available from the Club. Make sure you order your copy TODAY.

TODAY'S MASCOT

DANIEL HAMMOND, aged 12, lives in Haydon Wick, Swindon, but he is a fanatical Chelsea fan and visits Stamford Bridge as often as he can.



He was the mascot when the teams met earlier in the season at the County Ground, but he says it has always been his dream to run out with the teams at Stamford Bridge.

We wish Daniel and his family a memorable and enjoyable day at The Bridge - and best wishes for the future.

CLUB MEMBERSHIP

The closing date for membership has been extended in order to give fans an extra opportunity to join and enable them to get tickets for away games.

The following matches are all-ticket and tickets will only be sold to Club Members:

Plymouth Argyle, February 18, 1989

Sunderland, March 4, 1989

Brighton and Hove Albion, March 15, 1989

Shrewsbury Town, April 29, 1989

If you would like to attend these games but have not yet become a Club Member, the time to join is now.

Application forms with full details of prices and benefits are available from the Main Office. Either call in person, or send a stamped addressed envelope to Chelsea F.C., Stamford Bridge, Fulham Road, London SW6 1HS.



SWINDON

TOWN

FRASER DIGBY

England Under-21 international goalkeeper (four caps), who began his career with Manchester United, where he spent two years without making a first-team appearance. Spent short loan periods with Oldham Athletic and Swindon in 1985-86, before moving to the County Ground for £32,500 in December, 1986. Born Sheffield. Age 21.

DAVE HOCKADAY

Thirty-one-year-old full-back who was successfully converted from midfield to defence by manager Lou Macari last season. Began his career with Blackpool where he spent eight seasons before joining Swindon in August, 1983, and he has now made more than 200 appearances for the club. Signed a new two-year contract last summer. Born Billingham.

PHIL KING

Made his League debut at 17 for Exeter City against Halifax Town in February, 1985. Joined Torquay United for £3,000 in July, 1986, but in March, 1987, signed for Swindon for £17,000 after a month's loan. A full-back, he was Swindon's only ever-present last season. Born Bristol. Age 21.

ROSS MacLAREN

Edinburgh-born defender or midfielder who began his career with Shrewsbury Town, making his League debut against Swansea City in November, 1980. Joined Derby County in the summer of 1985 and was ever-present in two successive promotion seasons as Derby returned to Division One. Signed for Swindon last July for £150,000. Age 26.

JON GITTENS

Central defender who signed

from Southampton for £45,000 in July, 1987. Joined Southampton in 1986 after he was discovered playing for non-League Paget Rangers. Made just 18 appearances for Southampton before his transfer. Born Birmingham. Age 25.

COLIN CALDERWOOD

Twenty-four year old club captain and central defender, who signed from Mansfield Town for £27,500 in June, 1985, and today will be his 150th League appearance for Swindon. Began his career with Mansfield and made his debut as a 17-year-old against Crewe Alexandra in March, 1982. Born Stranraer.

TIM PARKIN

Experienced central defender voted Swindon's "Player of the Year" last season. Previous clubs: Blackburn Rovers, Malmö (Sweden), non-League Al-

URGENT FEB 14th URGENT

FEB 14 - NOW

Order your
Valentine Flowers !!!

We are just round the corner from
The Fulham Broadway tube station,
Or call us at **3816422**



URGENT

mondsbury Greenway and Bristol Rovers. Signed for Swindon from Bristol Rovers for £27,500 in July, 1986. Age 31.

JOHN CORNWELL

Twenty-four-year-old defender who began his career as an apprentice with Leyton Orient, for whom he made his League debut against Norwich City in May, 1982. Made more than 200 League appearances for the club before signing for Newcastle United for £50,000 in July, 1987. Joined Swindon for the same fee in December. Born Bethnal Green.

ALAN McLOUGHLIN

Began his career with hometown club Manchester United, where he spent two seasons without making a first-team appearance. A midfielder, he signed for Swindon on a free transfer in August, 1986. Has had two spells on loan with Torquay United during his time with Swindon. Age 21.

STEVE FOLEY

Twenty-six-year-old midfielder, who began his career with hometown club Liverpool, where he spent four seasons without making a League appearance. Also played for Fulham (on loan), Grimsby Town and Sheffield United before joining Swindon for £35,000 in July, 1987.

TOM JONES

A midfielder, he joined Swindon last September for £80,000 from Aberdeen. A former Chelsea apprentice, he was spotted by Aberdeen playing for non-league Farnborough Town and signed for £30,000 in April, 1987. His first full appearance for Swin-

| CHELSEA v SWINDON TOWN | | | | | | |
|------------------------------|------|---|---|------|-----|----|
| LEAGUE | | | | | | |
| SEASON | HOME | | | AWAY | | |
| 1988-89 DIV 2 | FA | | | FA | | |
| | - | | | 1-1 | | |
| LEAGUE SUMMARY | | | | | | |
| | P | W | D | L | F | A |
| HOME | 0 | 0 | 0 | 0 | 0 | 0 |
| AWAY | 1 | 0 | 1 | 0 | 1 | 1 |
| TOTAL | 1 | 0 | 1 | 0 | 1 | 1 |
| FA CUP | | | | | | |
| 1910-11 (4) | Home | | | | 3-1 | FA |
| 1914-15 (1) | Home | | | | 1-1 | FA |
| (R) | Home | | | | 5-2 | |
| 1919-20 (2) | Home | | | | 4-0 | |
| 1920-21 (2) | Away | | | | 2-0 | |
| LEAGUE CUP | | | | | | |
| 1963-64 (2) | Away | | | | 0-3 | FA |
| FULL MEMBERS CUP (SIMOD CUP) | | | | | | |
| 1987-88 (3) | Away | | | | 0-4 | FA |

don - against Watford in October - was also his League debut and he scored one of the goals in Swindon's 3-2 win. Born Aldershot. Age 24.

PAUL BODIN

Twenty-four-year-old midfielder who signed for Swindon from Newport County last March for £25,000. He had been with Newport for only four weeks, following his signing from non-League Bath City. Began his career with Cardiff City, where he made 57 League appearances. Has been playing recently at left-back. Born Cardiff.

CHARLIE HENRY

Currently in his testimonial season, he has been with the club since he joined them as a 16-year-old apprentice. He has played more than 250 games for Swindon and has also spent loan periods with Torquay United and Northampton Town. Born Acton. He will be 27 on February 13.

DAVID GEDDIS

Experienced striker who began his career as an apprentice with Ipswich Town, with whom he

won an FA Cup Winners' medal against Arsenal in 1978. Left Ipswich for Aston Villa during 1979-80 and has also played for Luton Town (on loan-twice), Barnsley, Birmingham City, Brentford and Shrewsbury Town before joining Swindon for £40,000 last October. Born Carlisle. Age 30.

DUNCAN SHEARER

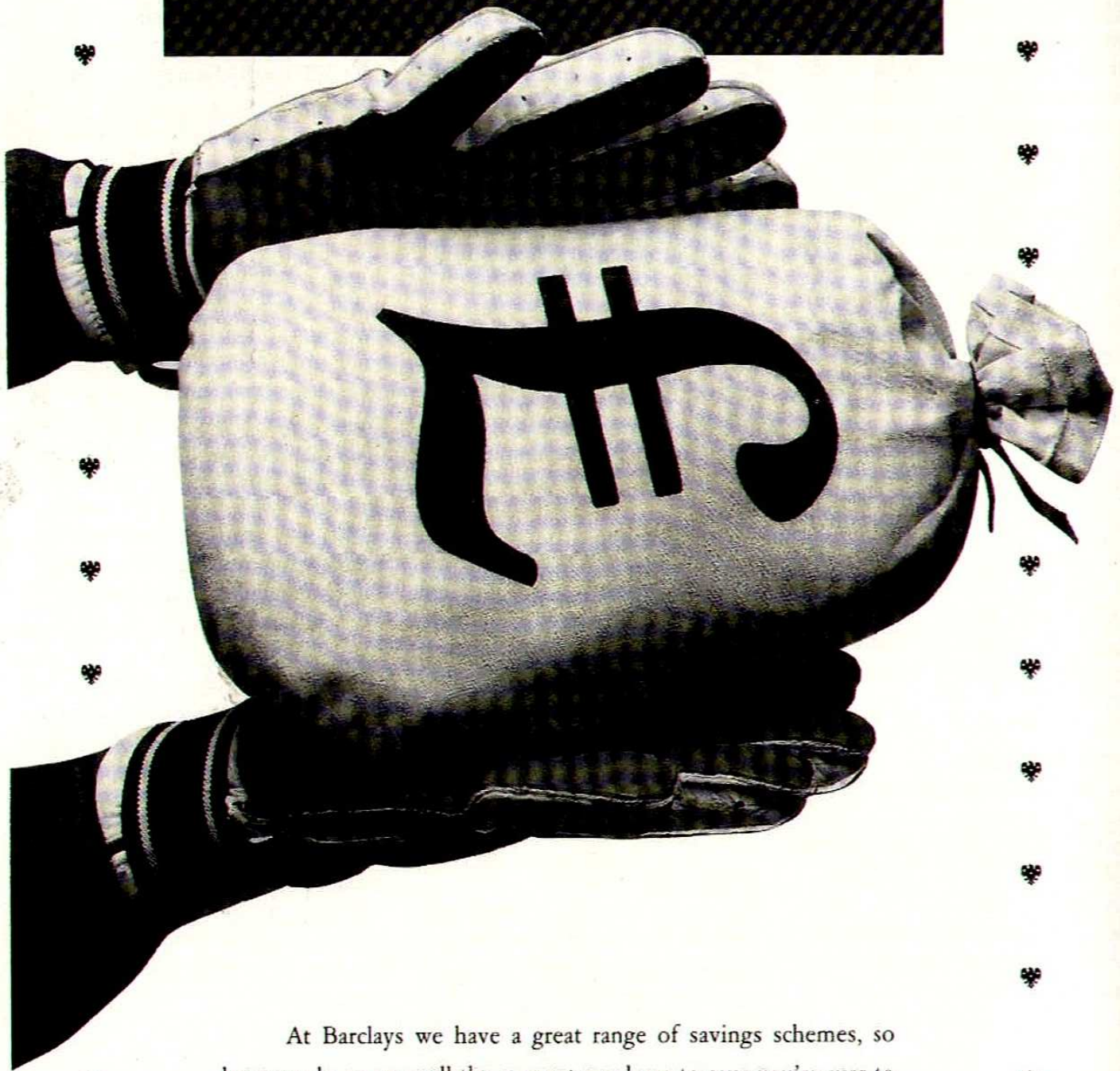
Twenty-six-year-old striker, who signed from Huddersfield Town for a club record £250,000 last June. Discovered by Chelsea playing for Scottish amateur side Inverness Clach, and signed for the club in 1983. Made just two League appearances in three seasons at The Bridge, despite scoring on his debut against Leicester City in February, 1986. Joined Huddersfield in March, 1986, and made 83 League appearances, scoring 38 goals before his transfer to Swindon. Born Fort William.

STEVE WHITE

Striker signed on a free transfer from Bristol Rovers in June, 1986. Began his League career with Bristol Rovers and also played for Luton Town, Charlton Athletic and Lincoln City (loan), before returning to Rovers in 1983. Returned from suspension last week against Oxford United, his first game since January-14.



GREAT SAVES.



At Barclays we have a great range of savings schemes, so however large or small the amount you have to save you're sure to find one that suits you.

We can offer everything from special accounts for young people with just £1 to save, to premium rate savings accounts like Capital Advantage for those with £10,000 or more to invest.

Ask at your local branch for details.

With Barclays on your side you're bound to get a good result.

MEMBER OF IMRO

● ● ● YOU'RE

BETTER OFF

TALKING TO



BARCLAYS

STEVE'S EIGHT AGONY WEEKS ARE ENDED . . .



THERE can be little more frustrating for a player than having to sit and watch from the stands because of injury.

Chelsea's Scottish international full-back Steve Clarke spent eight agonising weeks on the touchline after coming off with ankle ligament trouble in the 1-1 draw with Sunderland at The Bridge. He missed ten matches in total during that time.

"I don't know any player who likes watching a game

when he could be playing. It's awful when you want to be out there," says 25-year-old Steve.

"Now I'm glad to be back in the side. Normally that kind of injury doesn't take too long to clear up, but it just kept dragging on and on."

Steve made his comeback in the Simod Cup third-round tie against Nottingham Forest last month, dismissing from his mind any doubts about whether he would return.

"Any player is worried about getting his place back in the team when he's injured, but my concern was to get fit again. The rest is down to the manager-he picks the team."

He has put his international hopes to one side at the moment, but he plans to stake his claim in the months to come.

"The international scene has reached a dead-stop," he says, "but hopefully I'll be able to revive those hopes with Chelsea in the First Division."

Just for the record . . .

WITHOUT PREJUDICE - MR KEN BATES, AN APOLOGY.

ON 27 SEPTEMBER, 1988 WE CIRCULATED A REPORT STATING THAT THE CHAIRMAN OF BLACKPOOL FOOTBALL CLUB WOULD BE COMPLAINING TO THE FOOTBALL LEAGUE ALLEGING THAT CHELSEA HAD MADE AN ILLEGAL APPROACH TO THE BLACKPOOL PHYSIOTHERAPIST, MR BOB WARD. THE HEADING TO THE PIECE SUGGESTED THAT MR BATES WAS PERSONALLY IMPLICATED IN THE COMPLAINT.

MR BATES HAS ASSURED US, THROUGH HIS SOLICITORS, AND WE ACCEPT, THAT HE HAD NO PERSONAL INVOLVEMENT IN THE APPROACH MADE BY CHELSEA TO MR WARD AND THAT PRIOR TO THE DISCUSSIONS WITH MR WARD, CHELSEA BELIEVED THAT THEY HAD BLACKPOOL'S PERMISSION TO NEGOTIATE WITH HIM.

WE ACCEPT THAT THE HEADING TO THE REPORT WAS INCORRECT AND SHOULD NOT HAVE BEEN PUBLISHED AND WE HAVE APOLOGISED TO MR BATES FOR ANY DISTRESS AND EMBARRASSMENT CAUSED BY THE REPORT.

EXTEL

TOP PERFORMANCE. AT HOME.



AND AWAY.



From the very latest picture-in-picture FST Television to multi-effect digital video and the ultimate in Vision 8 Camcorders. From the world's smallest personal stereo to the most

sophisticated Compact Disc Hi-Fi system.

When it comes to performance, there's no better team than Sanyo to have on your side. At home or away.



SANYO 

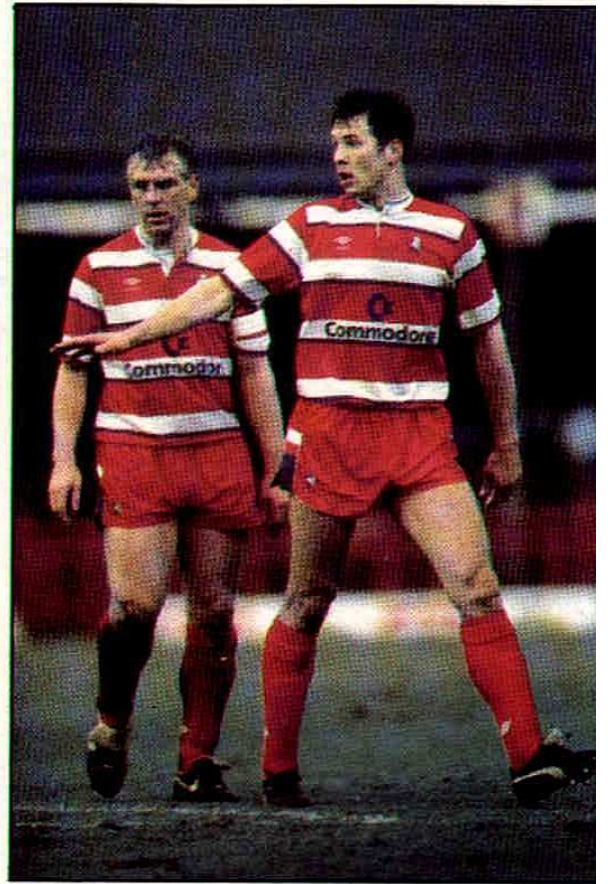
THE NEW WAVE IN JAPANESE TECHNOLOGY

Sanyo - Official suppliers of Audio and Visual equipment to Chelsea Football Club.



KERRY'S Magic Milestone in the sixth minute-his 100th League goal for Chelsea.

THIS looked like Goal No. 101 for him (below) but the ref had already blown for an infringement.



GRAHAM ROBERTS and Joe McLaughlin present a formidable barrier for the Rovers.



ACTION

BLACKBURN ROVERS

1988/1989 RESULTS · ATTENDANCES · APPEARANCES AND GOAL SCORERS

| | 1 | 2 | 3 | 4 | 5 | 6 | 7 | 8 | 9 | 10 | 11 | 12 | 14 |
|-----------|----------|-------------|-----------|------------|------------|--------------|------------|-------------|--------------|--------------|-----------------|-----------------|-----------|
| Hitchcock | Clarke | Wilson C. | Roberts † | McLaughlin | Pates | Wood | McAllister | Nicholas | Wilson K. 1 | Durie | Bumstead | Hall | Wood (75) |
| Freestone | Clarke | Wilson C. | Roberts | Pates | Wood | Hall | Nicholas | Wilson K. 1 | Durie | Bumstead | Lee | Dodds | |
| Hitchcock | Clarke | Wilson C. | Roberts | Pates | Wood | Hall † | Nicholas | Wilson K. | Durie | McAllister | Lee | Dodds (70) | |
| Freestone | Clarke | Wilson C. | Roberts | Pates | Wood | Hall † | Nicholas | Wilson K. | Durie | McAllister 1 | Lee | Dodds (57) | |
| Freestone | Clarke | Wilson C. & | Roberts p | Pates | Wood | McAllister | Nicholas | Wilson K. | Durie † | Bumstead | Hall (21) | Lee | |
| Hitchcock | Clarke | Dorigo | Roberts | Pates 1 | Bumstead † | McAllister | Nicholas | Dixon | Durie | Wilson C. | Wilson K. (71) | Wood | |
| Freestone | Clarke | Dorigo | Roberts | Pates | Wilson C. | McAllister | Nicholas | Dixon | Durie 1 † | Bumstead 1 | Wilson K. (58) | Wood | |
| Freestone | Clarke | Dorigo | Roberts p | Pates | Wood † | McAllister | Nicholas † | Dixon | Wilson K. | Bumstead | Hall (84) | Lee 1 (69) | |
| Freestone | Clarke | Dorigo 1 | Roberts | Pates | Lee | McAllister | Nicholas | Dixon 1 | Wilson K. | Bumstead | Hall | Wood | |
| Freestone | Hall | Dorigo | Roberts | Pates | Lee | Wood | Nicholas | Dixon 1 | Wilson K. | Bumstead | Dodds | Cundy | |
| Freestone | Hall | Dorigo | Roberts | McLaughlin | Wood 1 | McAllister 1 | Nicholas 1 | Dixon | Wilson K. 1 | Wilson C. | Lee | Dodds | |
| Freestone | Clarke | Dorigo 1 | Roberts p | McLaughlin | Wood | McAllister † | Nicholas | Dixon 1 | Durie 2 | Wilson K. | Wilson C. (63) | Lee | |
| Freestone | Clarke | Dorigo | Roberts | McLaughlin | Wood † | McAllister † | Nicholas | Dixon | Durie | Wilson K. | Wilson C. (65) | Lee (76) | |
| Freestone | Clarke | Dorigo | Roberts | McLaughlin | Wood | Wilson K. 1 | Nicholas | Dixon † | Durie | Wilson C. | McAllister (75) | Lee | |
| Freestone | Clarke | Dorigo | Roberts | McLaughlin | Wood | Wilson K. | Nicholas | Dixon † | Durie 1 | Wilson C. | McAllister | Lee (45) | |
| Freestone | Clarke † | Dorigo | Roberts | McLaughlin | Wood † | Wilson K. 1 | Nicholas | Dixon | Durie | Wilson C. | McAllister (65) | Lee (85) | |
| Freestone | Hall | Dorigo | Roberts | Lee 1 | Wood † | Wilson K. 1 | Nicholas | Dixon | Durie | Wilson C. | McAllister (66) | Dodds | |
| Freestone | Hall | Dorigo 1 | Roberts | Lee | Wood | Wilson K. | Nicholas | Dixon 1 | Durie | Wilson C. | McAllister | Hazard | |
| Freestone | Hall | Dorigo | Roberts p | Lee | Wood | Wilson K. | Nicholas & | Dixon | McAllister 1 | Wilson C. 1 | Bumstead | Dodds | |
| Freestone | Hall | Dorigo | Roberts | Lee | Wood | Wilson K. 1 | Nicholas | Dixon 1 | Durie 1 † | Wilson C. | Bumstead | McAllister (48) | |
| Freestone | Hall | Dorigo | Roberts | Lee | Wood | Wilson K. | Nicholas | Dixon 2 | Durie 2 | Wilson C. | Bumstead | McAllister | |
| Freestone | Hall | Dorigo † | Roberts | McLaughlin | Wood | Wilson K. | Lee 1 † | Dixon 1 | Durie 1 | Wilson C. | Bumstead (78) | McAllister (78) | |
| Freestone | Hall | Dorigo | Roberts p | McLaughlin | Wood | Wilson K. | Bumstead † | Dixon | Durie | Wilson C. | McAllister (64) | Dodds | |
| Freestone | Hall | Dorigo | Roberts | McLaughlin | Wood | Wilson K. | Lee † | Dixon 2 | Durie † | Wilson C. 1 | Bumstead (73) | McAllister (50) | |
| Beasant | Clarke | Dorigo 1 | Roberts † | McLaughlin | Wood | Wilson K. | Mitchell | Dixon | Lee | Wilson C. | McAllister | Hall (73) | |
| Beasant | Clarke | Dorigo | Roberts | McLaughlin | Hall | Wilson K. | Mitchell | Dixon 1 | Lee | Wilson C. | McAllister | Hazard | |
| Beasant | Clarke | Wilson C. | Roberts p | McLaughlin | Bumstead | Wilson K. 1 | Nicholas | Mitchell | Durie 1 | Hazard | Lee | McAllister | |

CHELSEA CLUBCALL



PHONE NOW

0898 12 11 59

☎ Exclusive news and interviews from Stamford Bridge. ☎ Match reports from home and away games, as they happen. ☎ Reports 24 hours a day, 365 days a year. ☎ Up-to-the-minute information. ☎ Be first with the news of signings, ticket availability, travel news, postponements etc. ☎ Everything you would find in your match-day programme — and more! ☎ What's new in the club shop. ☎ All the inside stories from Stamford Bridge. ☎ News and results from the reserves and youth teams.

CHELSEA CLUBCALL. YOUR TEAM TALKING.

Calls to Clubcall are charged at around 38p/min. 8am-6pm and 25p/min. after 6pm and at weekends inc. VAT SUPERCALL 'T'

| | | | | | | | | | | | | |
|-----------|--------|--------|---------|------------|-------------|--------------|----------|---------|-----------|-------------|----------------|-----------------|
| Freestone | Clarke | Dorigo | Roberts | Pates | Wilson C. | McAllister | Nicholas | Dixon | Wilson K. | Bumstead | Lee | Wood |
| Freestone | Hall | Dorigo | Roberts | Pates | Wilson K. 1 | McAllister † | Nicholas | Dixon 1 | Durie | Bumstead † | Wilson C. (61) | Lee (61) |
| Freestone | Hall † | Dorigo | Roberts | McLaughlin | Wood | Wilson K. | Nicholas | Dixon | Durie | Wilson C. † | Lee (70) | McAllister (54) |

OTHER FIRST TEAM MATCHES
 Jan 25 FELTHAM (AWAY) — W 6-2
 (Middlesex Senior Charity Cup — Round 5)
 Scorers: Mitchell 2, Durie 2, McLaughlin, Hazard.
 Team: Beasant, Clarke, Dorigo, Roberts (Lee), McLaughlin, Bumstead, Wilson K. (McAllister), Hazard, Mitchell, Durie, Wilson C.

Jan 27 SWANSEA CITY (AWAY) — L 1-2
 (Friendly)
 Scorer: Durie
 Team: Beasant, Clarke (Hall), Dorigo, Lee, McLaughlin, Bumstead, Wilson K. (McAllister), Hazard, Mitchell, Durie, Wilson C. (Le Saux).

| | | | | | | | | | | | | |
|-----------|----------|--------|-----------|--------------|--------|---------------|------------|--------------|---------|-----------|-----------|-----------------|
| Freestone | Clarke † | Dorigo | Roberts 1 | McLaughlin 1 | Wood | Wilson K. 1 † | Lee | McAllister 2 | Durie | Wilson C. | Hall (77) | Dodds (78) |
| Freestone | Hall | Dorigo | Roberts p | Lee | Wood 1 | Wilson K. | Nicholas | Dixon 1 | Durie † | Wilson C. | Bumstead | McAllister (43) |
| Freestone | Clarke | Dorigo | Roberts | McLaughlin | Wood | McAllister | Mitchell † | Dixon 1 | Durie † | Wilson C. | Lee (107) | Wilson K. (98) |

Home matches and scorers in bold type. † Player substituted () Time sub used. & Sent off. * Own goal. p Penalty. ‡ After extra time

MATCH OFFICIALS

REFEREE

ALLAN GUNN

(S. Chailey, Sussex)

LINESMEN

BRIAN HILL

(Red Trim)

RAY LEWIS

(Yellow Trim)

TEAMCHECK

CHELSEA v SWINDON TOWN

Shirts: Blue. Shorts: Blue

Shirts: Red. Shorts: White.

| | | |
|-------------------|----|---------------------|
| DAVE BEASANT | 1 | FRASER DIGBY |
| STEVE CLARKE | 2 | DAVE HOCKADAY |
| CLIVE WILSON | 3 | PAUL BODIN |
| GRAHAM ROBERTS(c) | 4 | TOMMY JONES |
| JOE McLAUGHLIN | 5 | COLIN CALDERWOOD(c) |
| JOHN BUMSTEAD | 6 | JON GITTENS |
| KEVIN WILSON | 7 | STEVE FOLEY |
| PETER NICHOLAS | 8 | STEVE WHITE |
| DAVID MITCHELL | 9 | ALAN McLOUGHLIN |
| GORDON DURIE | 10 | ROSS MacLAREN |
| MICKY HAZARD | 11 | JOHN CORNWELL |
| | 12 | |
| | 14 | |

TODAY'S UMBRO MATCHBALL

is sponsored by
**HOWARD RICHARD
SALES LTD**



SCOTTS

73-77 Britannia Rd
Fulham, London SW6



Oettinger

01-736 2016

Sales —

Service —

Parts —

WE'RE MOVING WITH THE TIMES

Scotts have now expanded their successful
formula into Fulham and offer the
complete motoring package.



**50 YEARS OF TOTAL
COMMITMENT TO
CUSTOMER SATISFACTION**

New and Used Vehicle Sales

The full Audi-Volkswagen range with our entire group stock to choose from. Enjoy the personal service of a local branch with the benefit of large company experience. Our association with Oettinger also enables us to offer extra performance and style on most models.

Service

A full After-Sales operation offering maintenance repairs and a Paint and Body estimating service. **BOOK TODAY** why wait or travel when Scotts have brought their operation to your doorstep.

Parts & Accessories

Our group parts stock is available through direct computer link. The accurate, first time, parts service. A full range of accessories can be ordered and fitted while you wait.

We now also offer new services throughout the group:

Self Drive Hire and Full Valet

Just enquire, our aim is to serve.

